



EEAC

ENVIRONMENTAL EDUCATION ADVISORY COUNCIL NEWSLETTER

SUMMER 1995

EEACERS ARE CITED

*O*n April 21, Carol Franken, a member of EEAC's Steering Committee and Chair of our Nominating Committee, received an award for Environmental Education at the 1995 Environmental Quality Awards ceremony of the U.S. Environmental Protection Agency. Last year, one of the recipients of the award was Rose Blaustein, an Honorary Member of the Steering Committee....On April 19, at a dinner in the United Nations Delegates Lounge, Lenore Miller, a member of the Steering Committee, received an award for Environmental Education from The City Club of New York, at its Sixth Annual Environmental Awards presentation. Kenneth Kowald, Vice Chair, Issues, received a Lifetime Achievement Award. Other past and present members of the Steering Committee who have been honored by The City Club, which was founded in 1892, are Richard Buegler, Jean Gardner, Ruth Eilenberg (Gateway Environmental Study Center), Sam Holmes, John Muir, William Nieter and Helen Ross Russell....Incidentally, the revised edition of Lenore Miller's publication, "Centering On...Using the Outdoors to Enrich Learning," has just been issued. It is a look at both plant and animal life with lessons for classes suitable for Grades K-8 and Special Education. It contains suggestions for student activism on behalf of the environment, geared to the months of the year. It is available for \$7.50 by sending a check to NYC/TCC, 10th Floor, 48 East 21st Street, New York 10010.



EEAC is a voluntary organization in support of Environmental Education for New York

UPCOMING EEAC EVENTS.....

Steering Committee Meetings

EEAC Steering Committee meetings are held from 4-6pm on the third Wednesday of every month. Please arrive promptly at 4pm!

All EEAC members are invited to attend and participate in the discussion. For information on the location of the meetings, contact Millard Clements at (212) 998-5495.

Upcoming meeting information:

Steering committee meetings are held at New York University, Press Building, 32 Washington Square Park East. Upcoming dates are: June 21 and July 19. There is no meeting in August.

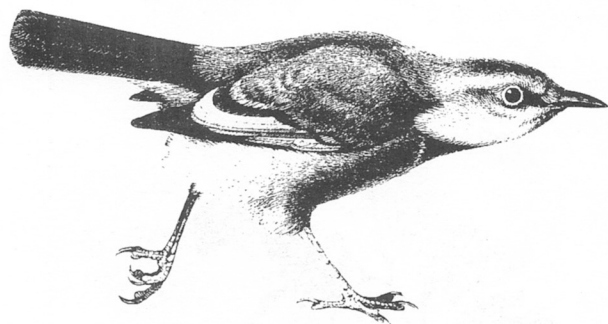
Newsletter Deadlines

Material should be submitted to the Editor on the first Monday of May, August, November and February. If possible, please submit on a floppy disc in WordPerfect 5.1 format.

Newsletter Committee

Kenneth Kowald
Mary Leou

Therese Braddick, Newsletter Editor
City Parks Foundation
The Arsenal, 830 Fifth Avenue
New York, NY 10021
(212) 360-8292



Special THANKS to Con Edison for supporting the publication of this newsletter.

ENVIRONMENTAL EDUCATION ADVISORY COUNCIL

c/o Brooklyn Center for the Urban Environment
The Tennis House
Prospect Park
Brooklyn, N.Y. 11215-9992
(718) 788-8500

This newsletter is a publication of the Environmental Education Advisory Council (EEAC), a voluntary organization of educators, classroom teachers, administrators and other professionals in active support of environmental education. It is available free upon request.

EEAC OFFICERS

Michael Zamm, Chairperson
Kenneth Kowald, Vice-Chair for Issues
Dorothy Siminski, Vice-Chair for Programs
Millard Clements, Secretary
Kim Estes-Fradis, Membership Secretary
Ruth Eilenberg, Treasurer

STEERING COMMITTEE *

Dennis Bader, NYS Marine Education Association
Gary Benenson, City College
Cheryl Best, Central Park Conservancy
Therese Braddick, City Parks Foundation
Patricia Campbell, Bx. Council on Env. Quality
Millard Clements, New York University
David Cohen, Educators for Gateway
Don Cook, Bank Street College
Ruth Eilenberg
Kim Estes-Fradis, NYC Dept. of Environmental Protection
Jeffrey Frank, Council on the Environment of NYC
Carol Franken, Community School District 4
Ingrid Hopkins, Christodora Inc.
Marcia Kaplan-Mann, Environmental Quest/UFT
John W. Kominski, NYC Board of Education
Kenneth Kowald
Mary Leou, UFEP, City Parks Foundation
Barbara Miller, NYC Board of Education
Lenore Miller, Gateway National Recreation Area
Gina McCarthy, Gateway Environmental Study Center
John Padalino, Pocono Environmental Education Center
Gail Pasternack, Cornell Cooperative Extension
Dorothy Siminski, Brooklyn Parks & Recreation
Barry Weinbrom, Brooklyn Center for the Urban Environment
Michael Zamm, Council on the Environment of NYC

HONORARY MEMBERS

Rose Blaustein
Dr. Eugene Ezersky
Samuel Holmes
Bernard Kirschenbaum
Michael Mann, Clearwater
John C. Muir, Brooklyn Center for the Urban Environment
Helen Ross Russell
Talbert Spence, National Audubon Society
Nancy A. Wolf, Environmental Action Coalition

*Affiliations for identification purposes only.

Chairman's Message

I was encouraged and heartened by the response to the issue dedicated to Harry Betros. Gene Ezersky, one of the founders of EEAC, at the 1974 Mohawk Conference and Rose Blaustein, long time EEAC supporter and participant and a seminal figure in the effort to make environmental education more "hands-on," both wrote wonderful letters (see them in this issue) complimenting the quality of the articles about Harry and the significance of preparing this tribute to a great environmental educator.

We continue to have difficulty with adequate participation at our membership meetings. The March 31st meeting at the Museum of the City of New York attracted only 2 people, each of whom appeared at very different times. The meeting simply didn't happen. The upcoming meeting at the Museum of Natural History, scheduled for May 15th, will occur before the publication of this issue.

We have analyzed this problem in this space intensively before. The general analysis seems to be that for many reasons the meetings have been high in quality but low in participation. Our mailing list is up to date and tight but simply does not produce a consistently good turnout. The program committee members and others connected to the process have been too burdened by their everyday job responsibilities to craft other outreach strategies. Some of the meetings have been interesting environmentally but perhaps don't focus on the needs of the teachers. Some mailings have gone out late. Of course some meetings over the last 2 1/2 years have been well attended and generally received very positive feedback. We'll continue to turn this over until we get it more consistently right.

EEAC has continued to lend its support to environmental education efforts threatened with retrenchment or outright elimination due to the budget/service cutting frenzy on all levels of government. I wrote a

letter to State Parks Commissioner Castro asking full funding for Operation Explore be restored. Ken Kowald wrote a letter with a similar message to Governor Pataki. The steering committee voted to spend up to \$1,000 to defray mailing and other costs incurred by the Educators for Gateway as they work to support Operation Explore. To lend support and/or for updates on the Operation Explore situation contact Regina McCarthy at (718) 252-7307.

Finally, I want to offer congratulations to Ken Kowald who received the City Club's Earthling Award for Lifetime Achievement on April 19th. In his role as Vice Chairperson of Issues for EEAC and in so many other roles with so many other organizations, Ken has been an incredibly effective supporter of and participant in environmental education and environmental protection over a 40-year period.

Mike Zamm



Environmental Resources

by *Kenneth Kowald*

All About Greening

Operation GreenThumb is now publishing an **"Education in the Gardens Newsletter,"** which contains all kinds of very interesting material....If you missed the GreenThumb exhibit at the Museum of the City of New York, you may want to get a copy of the publication, **"Tales From The Field II: Stories by GreenThumb Community Gardeners,"** which was issued in conjunction with the exhibit....And remember the **Harvest Fair**, which GreenThumb presents with the Brooklyn Botanic Garden, Saturday, September 9, from 10 a.m. to 3 p.m., at BBG....To learn all about GreenThumb, call (212) 788-8059, or write to Room 1020, 49 Chambers Street, New York 10007.

"New Parkland for New Yorkers: Opportunities to Protect Open Space in New York City," has been issued by the New York City Program of The Trust for Public Land. For a copy, call (212) 677-7171, or write to 666 Broadway, New York 10012.

Trees New York/NYC Street Tree Consortium, Inc., has just reissued its **"Tree Tips for Kids"** flyer. To obtain a copy, call (212) 227-1887, or write to Suite 432, 280 Broadway, New York 10007.

The Rare Pit and Plant Council was formed about 20 years ago and has information about tropical plants and starting them from seeds and cuttings. To learn more, write to Marty Biesc, 303 East 37th Street, New York 10016.

Did you know that schools are eligible to receive 50 tree seedlings or a wildlife shrub packet from the **New York State Department of Environmental Conservation?** To obtain information and order forms, call or write John Graham, Forester, Region II, at (718) 482-6480, 47-40 21st Street, Long Island City 11101.

The Brooklyn Botanic Garden has a **Children's Seed Program**, which offers seeds selected for

children at 35 cents a packet. To obtain an order form, write to the Program at BBG, 1000 Washington Avenue, Brooklyn 11225.

Established in 1990 and endowed with a grant from Congress, the **National Tree Trust** acts as a catalyst in the growing, planting and maintenance of trees throughout the nation. It has three programs, "Community Tree Planting," "America's Treeways" and "Growing Together," which gives elementary school students an opportunity to grow trees from tiny seeds, as a part of their science curriculum. To learn more, write to Suite 770, 1120 G Street, N.W., Washington, D.C. 20005, or call (202) 628-8733.

The International Society of Arboriculture is a non-profit organization supporting tree care research around the world and dedicated to the care and preservation of shade and ornamental trees. It has developed a wide range of brochures in its Consumer Information Program. For further information, write to P.O. Box GG, Savoy, Illinois 61874-9902.

The Student Conservation Association has published **"Earth Work: Resource Guide to Nationwide Green Jobs."** The price is \$18. To learn more, call (603) 543-1700.

You have until August 1 to nominate a candidate for inclusion in **American Forests' National Register of Big Trees.** This is a challenge for citizens to locate, nominate and ultimately preserve the biggest tree of each species in the country. For a free brochure with details on how to nominate a tree and other information, write to American Forests' Big Tree program, P.O. Box 2000, Washington, D.C. 20013, or call (202) 667-3300....And, while you're at it, find out about American Forests' Living Classroom program, which pairs tree plantings with customized interdisciplinary learning projects for teachers and students. The telephone number for information is the same as above and so is the address, but, in this case, write to Living Classrooms.

The American Forest & Paper Association has information which you may find of interest. Write to 1111 19th Street, N.W., Washington, D. C. 20036, or call (202) 463-2700.

Twenty years of research have gone into the development of the new, disease-resistant **American Liberty elm**, according to the Elm Research Institute. It is available to members of the Institute and through the Boy Scouts of America. To learn more about this program, "Johnny Elmseed," write to the Institute, Harrisville, New Hampshire 03450, or call (603) 827-3048.

The American Farmland Trust, a non-profit organization in Washington, D.C., has designated the Hudson River and Champlain Valleys of New York and Vermont as two of the 12 urban-edge regions in various parts of the nation as "America's most threatened agricultural areas." AFT says, "Communities need to prepare and plan for growth in a way that minimizes the destruction of our most productive farmland." To find out about AFT, telephone (202) 659-5170.

Students may obtain a list of 117 flower and vegetable seed catalogs by sending a stamped, self-addressed envelope to the **National Gardening Association**, School Seed Catalog List, 180 Flynn Avenue, Burlington, Vermont 05401.

America the Beautiful Fund has free seeds available for community and school groups. To find out about this, write to the fund, 219 Shoreham Building, Washington, D.C. 20005.

For a free catalog about wildflowers, write to the **Vermont Wildflower Farm**, Route 7, Charlotte, Vermont 05445, or call (802) 425-3500.



TREES, TALES, AND WOODLAND TRAILS

A nature program for first and second graders

"Trees Tales and Woodland Trails" is a citywide nature program offered by City Parks Foundation to first and second graders. In its second year of operation, the program utilizes city parks to introduce young children to the concepts of environmental stewardship and preservation. This spring, the program served a total of twenty-five classes from nine public schools throughout the city.

The program was conceptualized and developed by Mary Leou, Director of Education for the Urban Forest & Education Program, along with education consultant Roy Mueller. Linking parks and schools, the program demonstrates that city forests are rich with lessons for students of all ages, and can be used to help teach children environmental concepts.

During a classroom visit by program staff, students learn about urban forests through interdisciplinary activities. Each class is given a tree seedling to care for in their classroom for approximately one week. The following week, each class visits a nearby forest in one of New York City's parks. The children bring their tree seedling with them where they meet our urban foresters and plant their trees in the woods. The program has enabled hundreds of New York City students to visit forests in Van Cortlandt Park, Inwood Hill Park, Prospect Park, Forest Park, and Clove Lakes Park. For many children and their teachers, it was their first visit ever to a city forest.

At a time when classroom resources are dwindling, "Trees, Tales, and Woodland Trails" offers teachers and their students an opportunity for enrichment. Teachers receive a stipend for attending a teacher training workshop and \$100 worth of materials for classroom use. Transportation to local parks is also provided.

Funding for this program is provided by The New York Times Company Foundation and the Heckscher Foundation for Children. In-kind support is provided by the Lila Wallace-Reader's Digest Fund. As the "Trees, Tales, and Woodland Trails" program grows, City Parks Foundation hopes to serve an even larger number of children.

For information about this program, please call Mary Leou at 212-360-2745.

EEAC News

The following letters were received by EEAC steering committee members in response to the last issue of this newsletter. We are pleased to share them with our membership.

Dear Ken (Kowald),

I'm sending this note to you as Chairperson of the EEAC Newsletter Committee.

The recent newsletter in tribute to Harry Betros was superb, and very well deserved. Our colleagues who penned the tributes captured the essence of Harry beautifully - scholarly, unassuming, gentle, dedicated - a warm, considerate human being - and a brilliant environmentalist.

Thanks for giving me the chance to reflect on my many happy and rewarding experiences with Harry, and to reflect on his considerable contributions.

EEAC honors itself when it does honor to Harry Betros.

Eugene M. Ezersky

Dear Therese (Braddick),

As a former (proud) board member of EEAC I was so elated when I read the last newsletter that was dedicated to Harry Betros. It was so well put together and honored a gentle, bright man that I too knew so well as a Watson summer ecology graduate.

I saw Ruth Eilenberg yesterday where we judged a contest for DEP and took out my pen and was happy to become a "life member" of EEAC.

The tribute to Harry inspired me. It is a beautiful newsletter.

Eneas Sloman-Arkady

Dear Mike (Zamm):

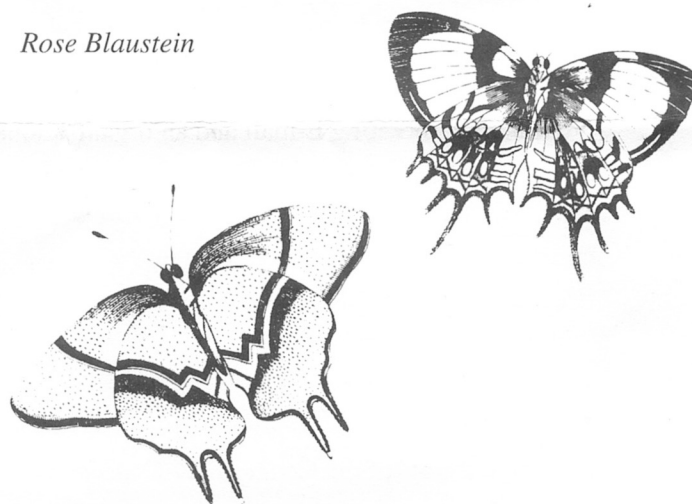
I was very touched by the EEAC Spring Newsletter in which several people wrote letters of tribute to Harry Betros who died last year. It warmed my heart to read the letters. They were so beautifully expressed.

I was fortunate to know Harry and to have shared many interesting times with him at High Rock. He also assisted me in my district's school camping program as well as in several other environmental activities in which I was involved. I feel privileged to have had the opportunity to work with him.

In his honor Elliott and I are enclosing a check of fifty dollars towards EEAC environmental programs.

Keep up the fine work you are doing to advance environmental education.

Rose Blaustein



Congratulations to Operation GreenThumb for receiving a \$20,000 matching grant in support of Project Re-Seed from the National Environmental Education & Training Foundation. Building upon the successful Education in the Gardens program, Operation GreenThumb will develop and present 10 three-hour workshops for teachers around urban environmental issues. For more information call Anna Forester at (212) 788-8073.

THE HARLEM MEER TELECOMMUNICATIONS RESEARCH PROJECT

By Carol Franken

The Harlem Meer Telecommunications Research Project is a collaboration between The Central Park Conservancy and Community School District #4 of the New York City Board of Education. This environmental action research initiative is designed to provide students with a community-based opportunity to develop critical thinking and problem-solving skills. Students from 13 schools in East Harlem's CSD#4 use the Harlem Meer Lake in Central Park as an outdoor laboratory, collecting data and sharing their results through a district wide telecommunications bulletin board.

As part of the restoration of the north end of Central Park, the Harlem Meer was drained, dredged, had aeration filters installed and was refilled in the Spring of 1993. The students visit the Meer and collect data so they can monitor the water quality by measuring limnology factors including temperature, clarity, pH, and dissolved oxygen. They observe both macro and micro-organisms, sometimes taking water samples back to their classroom for microscopic viewing. They are interested in how the limiting factors affect the survival of plant and animal species. Diurnal, weekly and seasonal variations are taken into account. Data is shared among the various classes through an innovative software program incorporating E-mail and an organizational data base. In this way the cumulative data can be analyzed for trends. Everyone's data is important, making the telecommunications relevant. Hands-on explorations in the field and in the classroom emphasize an inquiry approach. Finding answers often raises new questions. Many of the measuring tools such as secchi discs and plankton nets are constructed by the students.

Staff development workshops are offered monthly, after school, focusing on related science topics and skills. Curriculum development for the project includes pre-trip and post-trip components. Technical assistance in all areas is provided by the CSD#4 District Office staff and the Education Department staff of the Central Park Conservancy. Participating classes range from Kindergarten through 9th grade and include main school, bilingual, special education and alternative school settings.

The Harlem Meer, a vital part of CSD#4, is used extensively by the local community. The data collected by the students can be useful to the water management scientist of Central Park to help establish a balance between the aesthetic appearance versus the healthy habitat of this maintained water body. By studying the ecology of the Harlem Meer the students can affect their environment and develop a stewardship of this special area.

For further information contact EEAC members:

Cheryl Best, Director of Education and Recreation, Central Park Conservancy (212) 860-1311 or
Carol Franken, Science Coordinator, CSD#4, (212) 860-6021

MEMBERSHIP APPLICATION

_____ New Member _____ Renewal

Name: _____

Address: _____

Phone: () _____

Affiliation: _____

Title/Position: _____

Address: _____

Phone: () _____ Date: _____

Select either a \$15 dues payment to cover the cost of membership in EEAC for a calendar year, OR, a \$150 Life Membership. A membership entitles you to receive EEAC newsletters, program information mailings, and conference announcements.

Membership dues are tax deductible. Make all checks payable to EEAC.

Please complete the application and mail it, with your payment, to:

Ruth Eilenberg
Treasurer
196-32 53rd Avenue
Flushing, New York 11365

ENVIRONMENTAL EDUCATION ADVISORY COUNCIL
c/o Brooklyn Center for the Urban Environment
The Tennis House
Prospect Park
Brooklyn, New York 11215
(718) 788-8500

