



# EEAC

ENVIRONMENTAL EDUCATION ADVISORY COUNCIL NEWSLETTER

WINTER 1997

## *Special Feature*

### Metropolitan Woodland Happenings

by Mary J. Leou

*The rule of no realm is mine...But all worthy things that are in peril as the world now stands, those are my care. And for my part, I shall not wholly fail of my task...if anything passes through this night that can still grow fair or bear fruit and flower again in days to come. For I also am a steward. Did you not know? J.R.R. Tolkien*

**I**n our metropolitan area, forests exist as islands surrounded by some of the most densely populated human communities. These vital yet under protected ecosystems are all that remain of our natural heritage. They are biological, historical and cultural treasure troves, and in many ways represent our only connection to the past. Their future, however, will depend on more than just environmental rhetoric. Strong action-oriented leadership will be needed to advocate for the protection, preservation, and management of these areas.

On October 24, 1996, over 60 individuals representing natural resources managers, researchers, and educators attended the first annual meeting of the **Metropolitan New York Forest Ecosystem Council** in Forest Park, Queens. The formation of the Metro Forest Council (as it is commonly called) represents the long-term efforts of a group of scientists, educators, and land managers whose professional work focuses on the remaining forested lands in our region. The 21 founding members of the Council represent a cross-section of professionals who work in universities and colleges, government agencies, non-profit organizations, and cultural institutions in the metropolitan area.

In its first year, the Council will develop forest management guidelines, identify research and education priorities, begin a newsletter and Internet communications, monitor conservation issues in the metropolitan region, and create a database of metropolitan New York forested lands and related research, management, and education activities associated with them. Several committees have already been formed to carry out the activities of the organization.

*Continued on page 7*

## UPCOMING EEAC EVENTS.....

### Steering Committee Meetings

EEAC Steering Committee meetings are held from 4-6pm on the third Wednesday of every month. Please arrive promptly at 4pm!

All EEAC members are invited to attend and participate in the discussion. For information on the location of the meetings, contact Millard Clements at (212) 998-5495.

### Upcoming meeting information:

Steering committee meetings are held at New York University, Press Building, 32 Washington Square Park East in the Anderson Room. Upcoming dates are: January 15, February 19, and March 19.

### Newsletter Deadlines

Material should be submitted to the Editor on the first Monday of May, August, November and February. If possible, please submit on a floppy disc in WordPerfect 5.1 or 6.1 format.

### Newsletter Committee

Joy Garland  
Kenneth Kowald  
Mary Leou

Therese Braddick, Newsletter Editor  
City Parks Foundation  
The Arsenal, 830 Fifth Avenue  
New York, NY 10021  
(212) 360-8292



Special THANKS to Con Edison for supporting the publication of this newsletter.

## ENVIRONMENTAL EDUCATION ADVISORY COUNCIL

c/o Brooklyn Center for the Urban Environment  
The Tennis House  
Prospect Park  
Brooklyn, N.Y. 11215-9992  
(718) 788-8500

This newsletter is a publication of the Environmental Education Advisory Council (EEAC), a voluntary organization of educators, classroom teachers, administrators and other professionals in active support of environmental education. It is available free upon request.

### EEAC OFFICERS

Michael Zamm, Chairperson  
Kenneth Kowald, Vice-Chair for Issues  
Mary Leou, Vice-Chair for Programs  
Millard Clements, Secretary  
Kim Estes-Fradis, Membership Secretary  
Ruth Eilenberg, Treasurer

### STEERING COMMITTEE \*

Dennis Bader, NYS Marine Education Association  
Gary Benenson, City College  
Julie Beck, The Beacon School  
Therese Braddick, City Parks Foundation  
Millard Clements, New York University  
David Cohen, Educators for Gateway  
Joanne Dittersdorf  
Don Cook, Bank Street College  
Ruth Eilenberg  
Kim Estes-Fradis, NYC Dept. of Environmental Protection  
Jeffrey Frank, Council on the Environment of NYC  
Carol Franken, Community School District 4  
Joy Garland, UN International School  
Ingrid Hopkins, Christodora Inc.  
Terry Ippolito, EPA  
Marcia Kaplan-Mann, Environmental Quest/UFT  
Kenneth Kowald  
Mary Leou, UFEP, City Parks Foundation  
Jeffrey Liggins, USDI, Gateway National Recreation Area  
Barbara Miller, NYC Board of Education  
Regina McCarthy, Gateway Environmental Study Center  
John Padalino, Pocono Environmental Education Center  
Gail Pasternack, Cornell Cooperative Extension  
Nicky Schulak, Wave Hill  
Barry Weinbrom, Brooklyn Center for the Urban Environment  
Michael Zamm, Council on the Environment of NYC

### HONORARY MEMBERS

Rose Blaustein  
Dr. Eugene Ezersky  
Samuel Holmes  
Bernard Kirschenbaum  
John W. Kominski, NYC Board of Education  
Michael Mann, Clearwater  
John C. Muir, Brooklyn Center for the Urban Environment  
Helen Ross Russell  
Talbert Spence, National Audubon Society  
Nancy A. Wolf

\*Affiliations for identification purposes only.





## CHAIRMAN'S MESSAGE

**O**n October 1st, EEAC proudly co-sponsored with the NYC Board of Education and New York Releaf, the first Green Horizons Conference. Organizational and technical assistance was provided by the Environmental Action Coalition. The Brooklyn Botanic Garden was the site and its staff provided extraordinary support. Con Edison and the Bartlett Tree Expert Company provided significant resources to the endeavor. Intermediate school youth and their guidance counselors from all over New York learned about greening professions from practitioners in the field. Environmental educators assisted the greeners at each training station. The Brooklyn Botanic Garden was resplendent in the early Fall weather. High quality interaction between workshop leaders and students was prevalent and there was a general camaraderie amongst all participants, which coalesced at a lovely lunch at the Garden; the meal was highlighted by an inspiring talk from Schools Chancellor Rudy Crew.

Congratulations to prime mover Nancy Wolf, to Ken Kowald and Naomi Zercher, and to the rest of the organizing committee.

Speaking of Chancellor Crew, the effort to follow up his overture to the gardening/greening community with respect to spreading the cognitive and emotional benefits of involvement in gardening throughout the NYC Public Schools, goes on. The coalition spawned by Rudy's original conversation with Parks Commissioner Henry J. Stern, now called "Green-Ed", has drafted a letter to be reviewed and signed by Stern laying out some prerequisites if such an enterprise is to be successfully implemented. These include administrative support at district and school levels, custodial support, funds for teacher training and related materials, and a formal evaluation to assess skill development spurred by gardening programs. This coalition is being ably led by Linda Huntington of GreenThumb with the support of GreenThumb Executive Director Jane Weissman and a host of greening organization representatives. EEAC is involved in this effort and will continue to be.

Michael Zamm



## Dates

You may still have time—but just—to find out and apply for the 1997 **Rudy Bruner Award for Excellence in Urban Environment**. Write to the Bruner Foundation, c/o Bruner/Cott & Associates, 130 Prospect Street, Cambridge, Massachusetts 02139, or call (617) 492-8400. Call or write now!

According to the calendar of Educators for Gateway, the **“Winter Wonders” conference** will be held at the Gateway Environmental Study Center on Saturday, January 25 and **“Springboard to the Arts”** will be held Saturday, May 3. For more information, write to EFG at 2950 Joyce Lane, Merrick, New York 11566, or call (516) 868-5872.

**“River of Words”** is a national poetry contest, in which children from kindergarten through high school senior year are invited to submit works about their watershed—poems, paintings or drawings. The deadline is February 15. For information, entry forms, or to order Teacher’s Guides, contact Pamela Michael, International Rivers Network (IRN), 1847 Berkeley Way, Berkeley, California 94703, or call (510) 848-1155.

Paintings can tell us stories about the past and there are 25 about New York City on display through February 16 in the Museum of the City of New York, Fifth Avenue and 103rd Street. The exhibit is called **“Revisiting the Scene: New Evidence, New Discoveries”** and The *New York Times* reported that “it succeeds in giving a lively glimpse of the past,” more particularly the late 19th and early 20th Century.

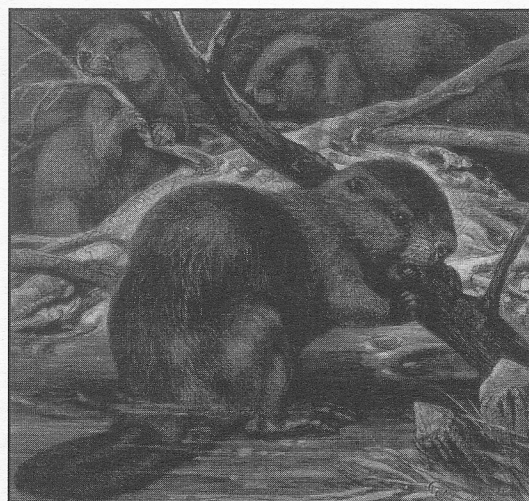
Among the items school groups may wish to see in the **Liberty Science Center** are “Special Effects,” through February 28, and “Square Wheels,” through April 6. A free shuttle bus now connects the Center with the Grover Street PATH station and the Colgate Center ferry landing. For information on exhibits and the shuttle, call (201) 200-1000.

Fred Baumgarten spoke at a recent EEAC Steering Committee meeting and told us about **“Eye Openers: Field Ornithology for Intermediate Grades.”** Slots for the early Spring (March 1-April 15) and Late Spring (April 15-May 30) programs may still be available. Call him at (212) 979-3081.

Because of conflicts with public school schedules, the New York City Arbor Day Committee will be observing **Arbor Day** on Thursday, May 1. To find out about teacher workshops and other Arbor Day activities, call Jane Brook-Barba at the Parks Council, (212) 371-6048, extension 236.

The **New York Hall of Science** is planning these events for 1997: “Beyond Numbers,” which explores patterns, problem-solving and abstractions, February 1-April 13; “Seeing the Unseen: Dr. Harold E. Edgerton and the Wonders of Strobe Alley,” a hands-on exhibition organized by the George Eastman House,” April 26-July 6, and the opening of New York’s only Science Playground, a 30,000 square foot exhibition, in May.

**“Masters of the Ocean Realm: Whales, Dolphins and Porpoises,”** produced by the Natural History Museum of Los Angeles County, is on view through January 5 at the Sands Point Preserve in Port Washington. Call (516) 571-7900 for information.







## Around New York

New York City has a hotline which permits you to complain about **Quality of Life problems**. Call 888-677-LIFE.

EEAC Board Member Terry Ippolito has available a brochure/poster, **"Save Out Species: Protecting Endangered Species from Pesticides,"** which you may obtain by writing to her at Region 2, United States Environmental Protection Agency, 26th floor, 290 Broadway, New York 10007, or calling (212) 637-3671....The National Coalition Against the Misuse of Pesticides publishes **"Chemical Watch Fact Sheets,"** a booklet that describes the risks associated with various pesticides. Write to 701 E Street SE, Washington, D. C. 20003, or call (202) 543-5450. More information about pesticides is available from the Rachel Carson Council, Inc., 8940 Jones Mill Road, Chevy Chase, Maryland 20815, telephone (301) 652-1877.

At recent EEAC Steering Committee meetings we learned about **"Floating the Big Apple,"** a boating project that teaches people about boats of times past and the Hudson River and which is looking for student participants. Write to 400 West 43rd Street, #3212, New York 10036, or call (212) 564-5412. We also heard about **Waste Management of New York,** whose services include commercial and industrial waste collection, recycling programs, medical waste services and emergency snow removal. To find out more, call Will Flower at (718) 386-7900.

New York City Parks and Recreation has completed its **tree census**, in which 700 volunteers counted approximately 500,000 trees on the City's 33,278 streets, down from the 977,750 counted in 1936. The Norway Maple is most common in the Bronx, Queens and Staten Island; the Honey locust is most common in Manhattan and the London plane in Brooklyn.

In 1995, the **Gateway National Recreation Area** had 6,064,300 visitors, up from 4,192,300 in 1994. That puts Gateway ahead of such other major attractions as Yosemite National Park and Yellowstone National Park.

The Regional Plan Association has published the **"Discover the Harbor Guide,"** which contains information and a map about the New York-New Jersey Harbor Estuary. To obtain a copy write to RPA, 11th floor, 61 Broadway, New York 10006.

The **Central Park Children's Zoo** has been demolished, but when the new zoo opens in the Fall of 1997, it will be geared to education, according to the Wildlife Conservation Society, which will operate it. Watch for the opening date.

Anyone who buys or rents a home built before 1987 should know that Federal regulations on the disclosure of lead-based paint in residences have taken effect in New York City. The Federal Environmental Protection Agency has a brochure, **"Protect Your Family From Lead in Your Home,"** available if you call (800) 424-LEAD, which is a Federal EPA hotline.

## Moving Around

**Joel Miele** is the new Commissioner of the City's Department of Environmental Protection; his predecessor, Marilyn Gelber, is now head of the New York Conservation Education Fund. **Paul Berizzi** is the new Executive Director of the Environmental Action Coalition. **Paul Evans** is the new Director of Bronx Green-Up at the New York Botanical Garden.

## Urban Forest & Education Program News

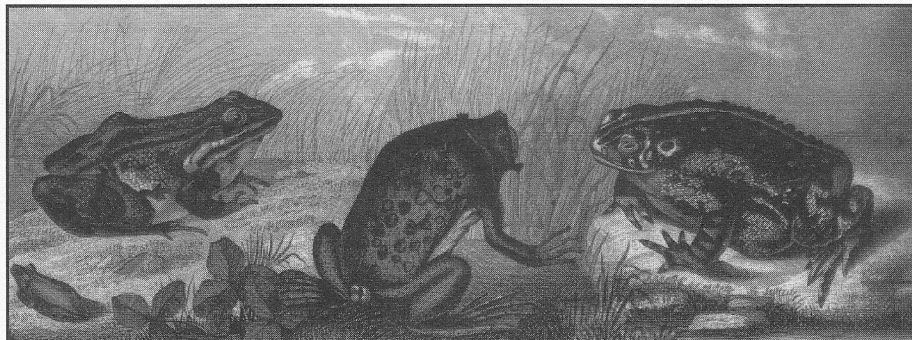
**I**t was the best of years; it was the worst of years. The Urban Forest & Education Program, (UFEP) was awarded the 1996 Outdoor Conservation of the Year Award by the NYS Conservation Council for its "great strides in forest management and education." In October UFEP planted its 150,000th tree in Forest Park, Queens to commemorate the site where the woodland restoration and education project began back in 1991. At the same time, UFEP downsized from a staff of 30 in 1991 to a staff of 7 in 1996. Forest management activities have been severely curtailed and in 1997 reforestation will focus primarily on Staten Island with an Urban Resources Partnership grant and generous support from Tom Paulo, Staten Island Borough Commissioner. Funding is currently being sought to restore the program to other boroughs.

UFEP's citywide education initiatives continue to grow. In January 1997 the Urban Forest & Education Program will initiate the **New York City Woodland Teacher Training Institute** with major funding from the Greenwall Foundation, and in-kind support from Community School District 9 in the Bronx. This two-year project will train 48 elementary teachers in woodland ecology and provide hands-on outdoor programs for approximately 1,500 students in Van Cortlandt Park. Teachers in the program will learn about forest ecosystems at the Urban Forest Ecology Center and develop topical units of study on forests integrating mathematics, science, and technology.

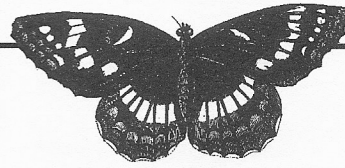
UFEP has also produced *The Teacher's Guide To New York City's Forests: A Curriculum for Grades K-8*. This 90-page interdisciplinary curriculum provides classroom teachers with field trip ideas, lesson plans, woodland maps, park resources, bibliographies, and field-based activities which focus on urban forests. The guide will be available through citywide workshops sponsored by UFEP's education staff beginning this spring.

In collaboration with Christodora, Inc. the Urban Forest Ecology Center has spawned an after-school program called the New Youth Conservationists, for 20 New York City high school students. The year-long restoration and stewardship program is led by JoVeda Hornedo, Center Manager, Jackie Broder, Bronx Urban Park Ranger, and Josh Ellsworth, UFEP education intern. Students will work on restoring the colonial gardens adjacent to the Van Cortlandt House Museum. They have already planted 15 tulip trees on the John Kieran Nature Trail and plan to assist Dr. Richard Stalter, St. John's University biology professor, in collecting data on tree death in urban forests. They have spent a weekend at the Manice Education Center, a Christodora facility in the Berkshire Mountains.

For more information about the UFEP programs please contact: Mary Leou, Director of Education, at (212) 360-2745.







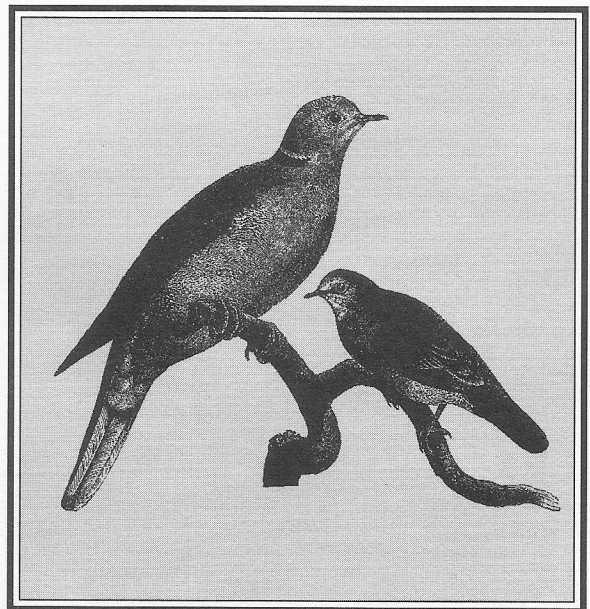
## SAVE THE DATE

### Education Expo in Prospect Park

Prospect Park Alliance in collaboration with the Brooklyn Center for the Urban Environment, Brooklyn Urban Park Rangers, the Urban Forest & Education Program of City Parks Foundation, the Brooklyn Wildlife Conservation Society, and EEAC, will host a teacher's Expo in Prospect Park on April 6 and 7, 1997. The program is sponsored by Kenneth K. Fisher, City Council Member. Teachers will be able to find out about park-related programs, resources, and curriculum materials from all of these organizations. Hands-on activities, workshops, woodland tours, trolley rides, print materials, games, door prizes and goody bags will be part of this exciting spring gathering of educators in Prospect Park. New teacher credit will be available. Mark your calendar and plan to attend! For more information contact: Carol Anastasio at (718) 965-8930.

*Continued from page 1*

Education will play a significant role in providing leadership and expertise in raising public awareness about these invaluable yet threatened ecosystems. As chair of the Education Committee of the Metro Forest Council, I invite all EEAC members to support and actively participate in the ground-level activities of this newly-formed organization. It is a unique and unprecedented opportunity for educators, forest managers, and scientists to pool their resources and expertise in a collective effort to insure the preservation of our metropolitan forests. For more information about the Council or membership, contact Edward Toth, President at (718) 965-6590.



## MEMBERSHIP APPLICATION

\_\_\_\_\_ New Member      \_\_\_\_\_ Renewal

Name: \_\_\_\_\_

Address: \_\_\_\_\_

Phone: (        ) \_\_\_\_\_

Affiliation: \_\_\_\_\_

Title/Position: \_\_\_\_\_

Address: \_\_\_\_\_

Phone: (        ) \_\_\_\_\_ Date: \_\_\_\_\_

Select either a \$20 dues payment to cover the cost of membership in EEAC for a calendar year, OR a \$200 Life Membership. A membership entitles you to receive EEAC newsletters, program information mailings, and conference announcements.

Membership dues are tax deductible. Make all checks payable to EEAC.

Please complete the application and mail it, with your payment, to:

Ruth Eilenberg  
EEAC Treasurer  
401 East 86th Street, Apt. 4F  
New York, NY 10028

## ENVIRONMENTAL EDUCATION ADVISORY COUNCIL

**c/o Brooklyn Center for the Urban Environment**

The Tennis House

Prospect Park

Brooklyn, New York 11215

(718) 788-8500

